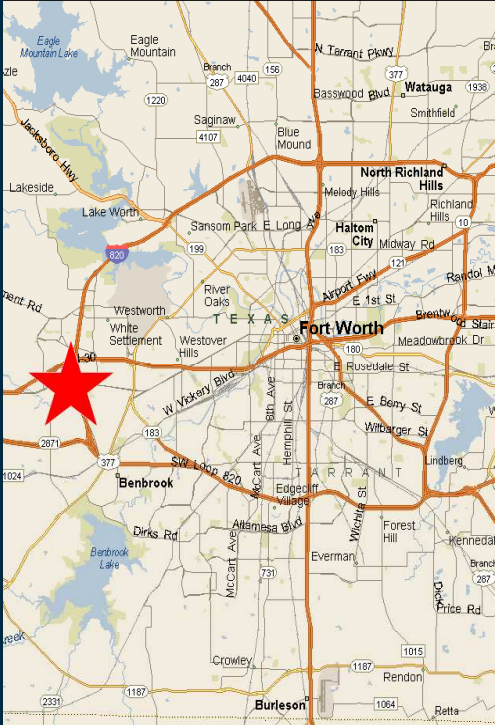


# 9715 and 9719 Santa Paula Drive Fort Worth, Texas 76116

## FOR LEASE New Construction Office/Warehouse



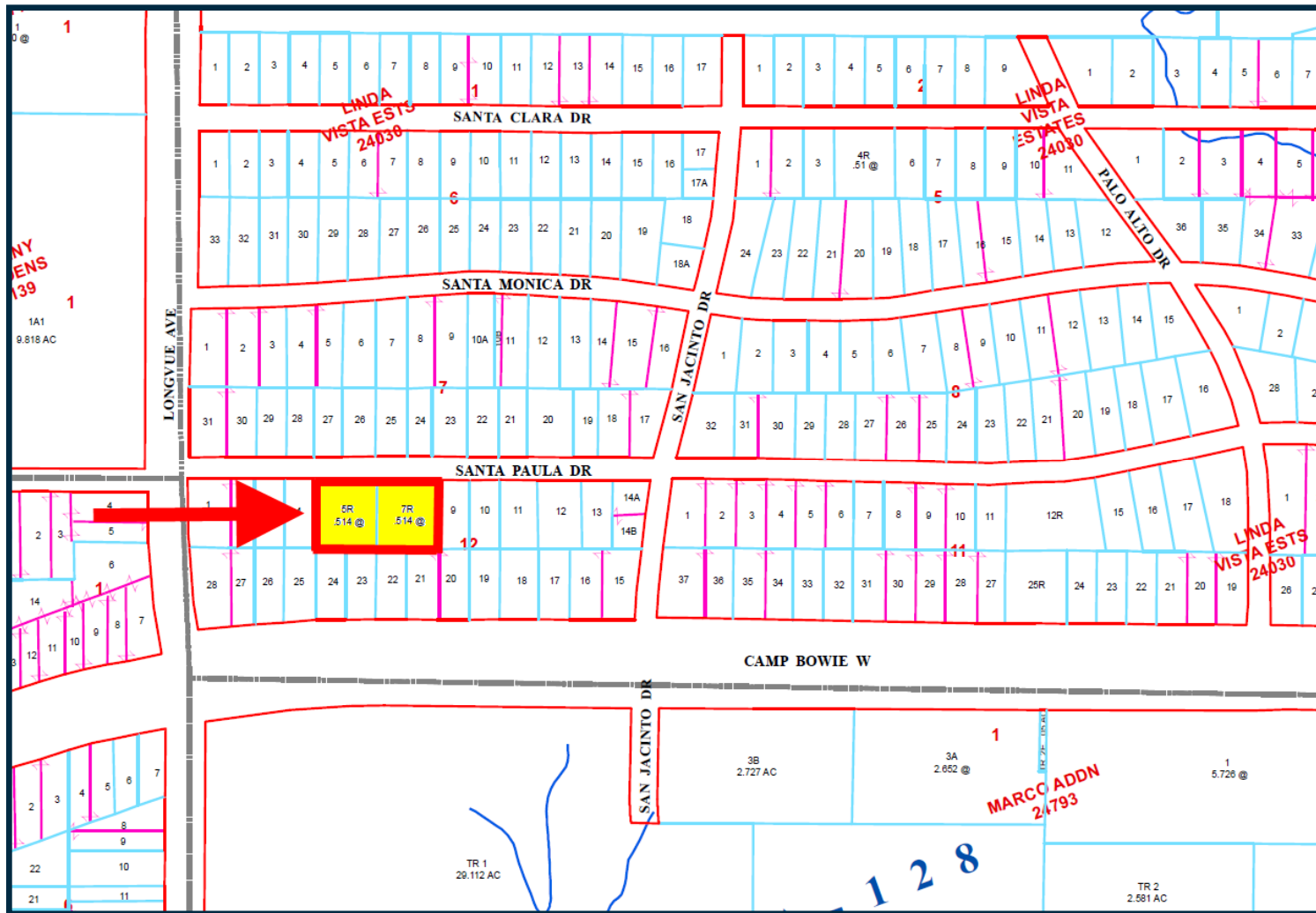
### FEATURES

Location:	West Fort Worth, 1/2 mile west of Loop 820 and 1/2 mile south of I-30
Building Size:	Two 7,200 SF (+/-) buildings = 14,400 SF (+/-) total
Available Space:	From 2,400 SF (+/-) to 4,800 SF (+/-) available
Office Area:	One restroom and two offices per 2,400 SF (+/-) space
Land Size:	44,800 SF (+/-)
Building Description:	Two 7,200 SF (+/-) free-standing buildings divided into 2,400 SF (+/-) spaces. New construction.
Year Built:	4th quarter 2019
Loading:	1 (10' X 10') grade level per 2,400 SF (+/-) space
Zoning:	PD - Planned Development
Additional Features:	New construction
Rental Rate:	\$13.00 PSF, Gross

# PROPERTY PHOTOS



# TAX MAP



# AERIAL



# LOCATION MAPS

